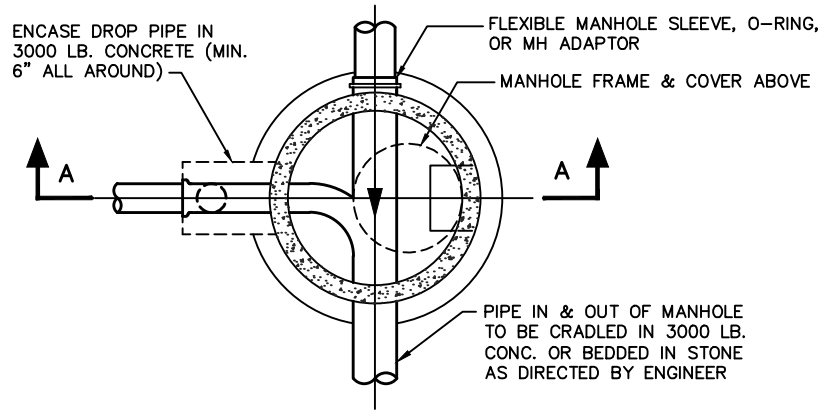


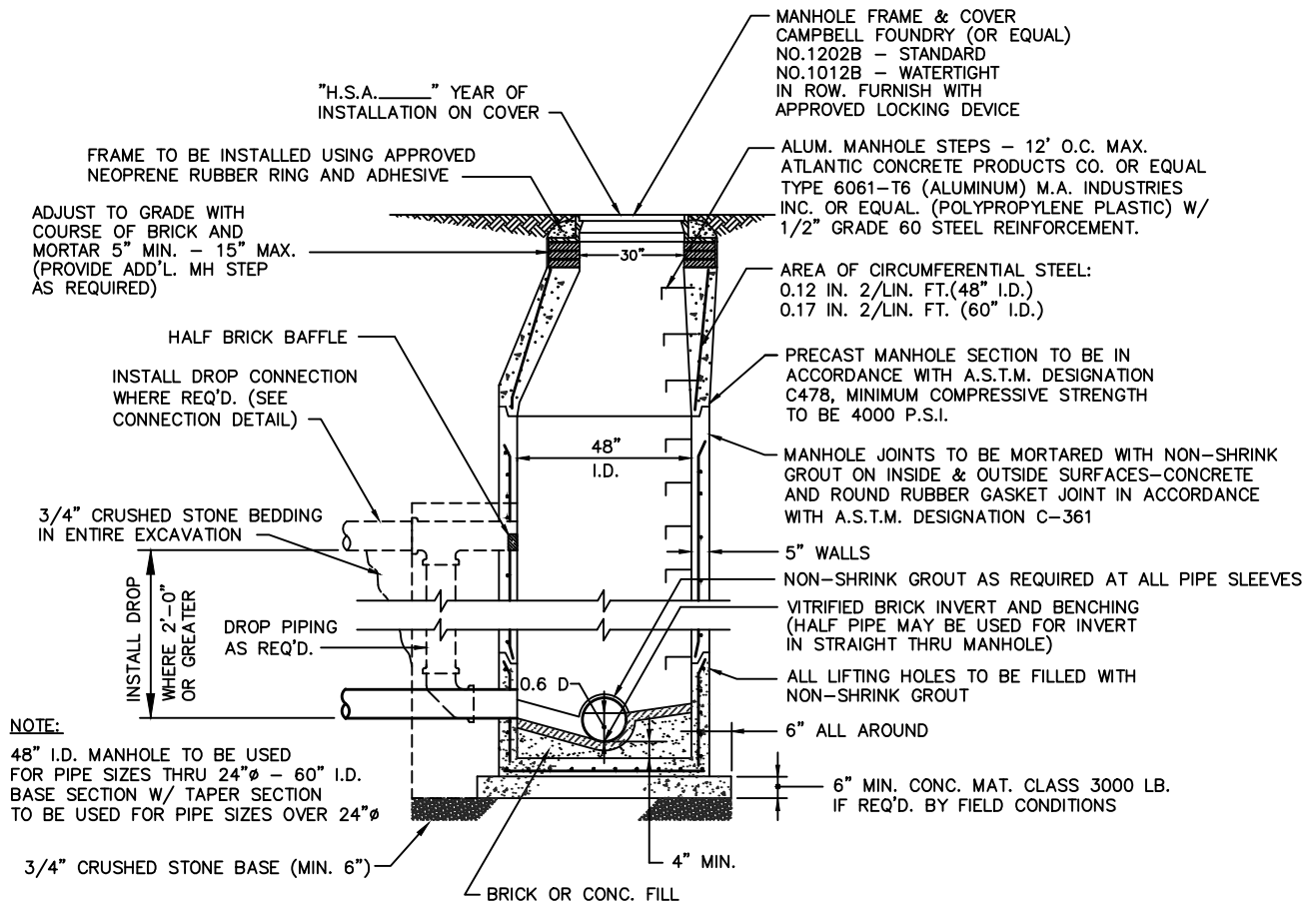
NOTES:

1. ENTIRE EXTERIOR TO RECEIVE COATING OF BITUMINOUS SEALER.
2. ALL CONSTRUCTION SHALL BE IN ACCORDANCE WITH THE LATEST O.S.H.A. STANDARDS.
3. BASE TO BE :
I.D. 4'-0" FOR SEWERS < 24" DIA.
I.D. 5'-0" FOR SEWERS 24" - 36" DIA.
4. WITH TRANSITION SECTION BETWEEN BASE AND CONE SECTION
5. CONNECTIONS INTO EXISTING MANHOLES SHALL BE COMPLETED USING A SUITABLE ADAPTOR AS APPROVED BY THE ENGINEER.

CONTROL MANHOLES SHALL BE STRAIGHT-THRU WITH UNIFORM SLOPE UPSTREAM AND DOWNSTREAM AND SHALL BE CAPABLE OF ACCEPTING METERING AND SAMPLING DEVICES WHICH MAY BE REQUIRED BY HSA.



SECTIONAL PLAN



SECTION A - A

STANDARD SANITARY MANHOLE DETAIL

NOT TO SCALE

© Mott MacDonald

THIS DOCUMENT IS ISSUED FOR THE PARTY WHICH COMMISSIONED IT AND FOR SPECIFIC PURPOSES CONNECTED WITH THE CAPTIONED PROJECT ONLY. IT SHOULD NOT BE RELIED UPON BY ANY OTHER PARTY OR USED FOR ANY OTHER PURPOSE. WE ACCEPT NO RESPONSIBILITY FOR THE CONSEQUENCES OF THIS DOCUMENT BEING RELIED UPON BY ANY OTHER PARTY, OR BEING USED FOR ANY OTHER PURPOSE, OR CONTAINING ANY ERROR OR OMISSION WHICH IS DUE TO AN ERROR OR OMISSION IN DATA SUPPLIED TO US BY OTHER PARTIES.

<p>Title</p> <p>HANOVER SEWERAGE AUTHORITY WHIPPANY, NEW JERSEY</p> <p>STANDARD SANITARY MANHOLE DETAIL</p>		<p>M M</p> <p>MOTT MACDONALD</p>		<p>111 Wood Avenue South Iselin NJ 08830-4112 United States of America Certificate No. 24GA28016600</p> <p>T +1 (800) 832 3272 F +1 (973) 376 1072 www.mottmacamericas.com</p>			
Date	Drawn	Checked	Approved	Scale at ANSI A	Drawing Number	Status	Rev
				NONE	D-2	PRE	REV. 1